

Company Profile

caprari

Index

Our group	04
In numbers	06
Capability to respond to any requirement	08
Exclusive technical consultancy	10
Innovation	12
Production technology	14
Certified quality	18
Global presence local operation	20
Network	22
Product range	24



**Water is
our element**

Our group



Water is not negotiable

Caprari brings decades of expertise in designing and manufacturing efficient, sustainable water pumping solutions. With a global footprint and a deep understanding of diverse customer needs, we are uniquely positioned to anticipate and respond to challenges in water management.

Our extensive range of fully MADE IN ITALY products embodies flexibility, innovation, and exceptional quality. This dedication ensures our solutions are tailored to meet the highest standards of performance and sustainability.

Wateralia, a strategic industrial holding company formed in 2021 through the collaboration of Caprari and Ambienta – one of Europe's leading asset managers dedicated to environmental sustainability – is committed to providing innovative solutions for the responsible management of water resources.



In numbers

1945

year the company was founded

10million

pumps produced

145

countries around the world
where we are present

2,100

international partners
and distributors

11

subsidiaries



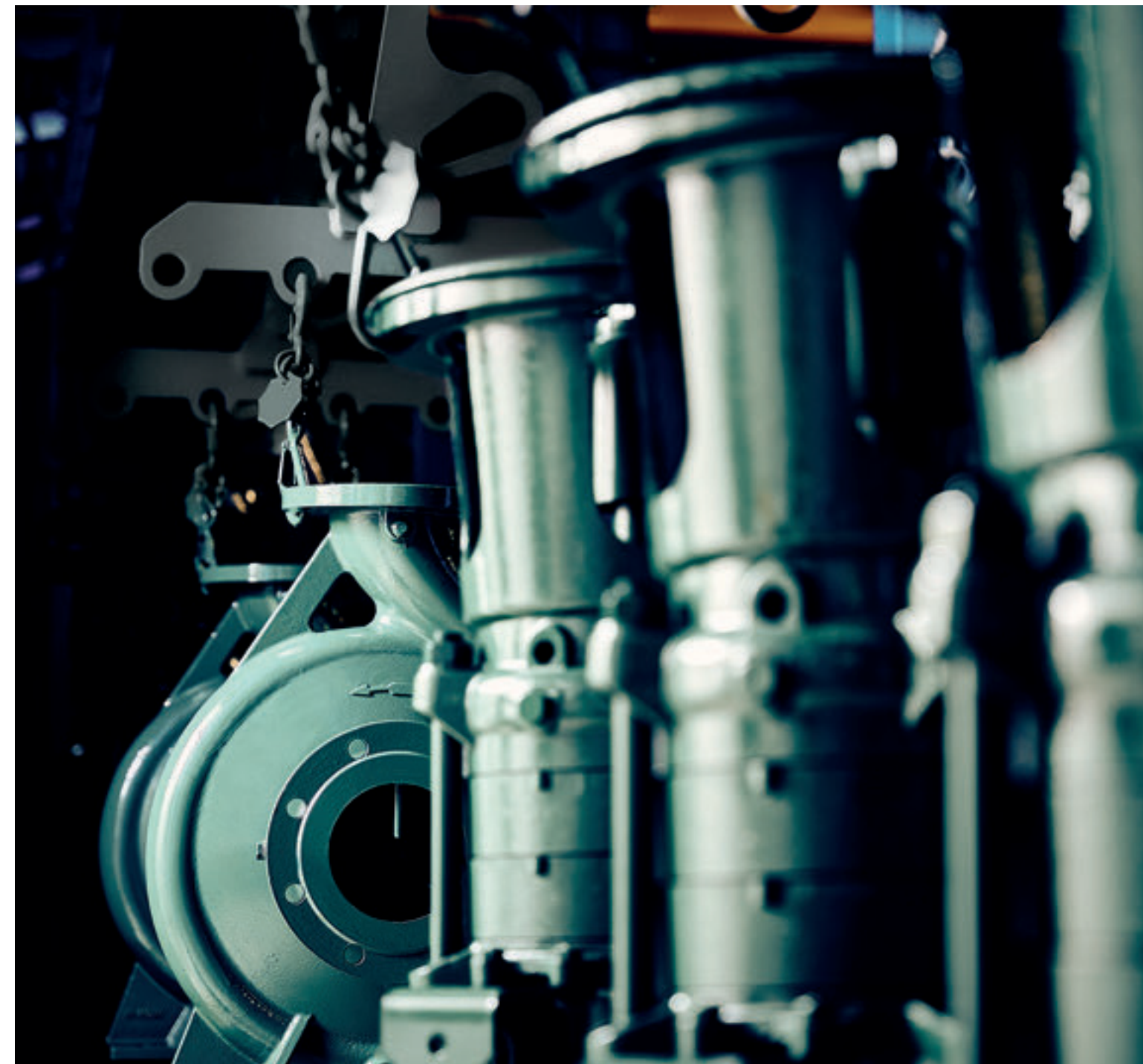
3

production plants



3

sustainability objectives



Capability to respond to any requirement

Caprari specializes in developing advanced water pumping solutions for a diverse range of sectors and applications. From initial product design through to rigorous testing, we deliver a comprehensive service that ensures the highest standards of performance and reliability.

This commitment to excellence has earned us the trust of organizations worldwide, including government bodies, private enterprises, OEMs, and engineering firms.

Our objective is to build enduring partnerships founded on mutual satisfaction and trust, fostering shared growth and success with our customers across the globe.



aqueducts and waste water management

- Treatment of drinking water, domestic and industrial wastewater
- Extraction from deep wells
- Distribution and pressurization
- Water purification and desalination



infrastructure

- Rainwater recovery and discharge
- Water drainage from excavations
- Waste water management and treatment
- Pressurization and fire prevention



irrigation

- Groundwater withdrawal
- Large irrigation systems
- Land reclamation
- Greenhouse and frost protection irrigation



industry, OEM and offshore

- Process auxiliary services
- Artificial snow-making
- Dust suppression systems in quarries and mines
- Sea water application

Exclusive technical consultancy

Caprari offers a premium technical consultancy service, delivering end-to-end solutions throughout every stage of a project. From initial study and analysis to prototyping, production, commissioning, and after-sales support, we ensure our customers receive expert guidance at every step.

Our dedicated and highly skilled Application Engineering team conducts in-depth feasibility studies for bespoke and specialized applications. They provide prompt, reliable feedback on heavy-duty products and address the technical complexities of even the most demanding tender specifications. This comprehensive approach underscores our commitment to delivering tailored solutions that meet the highest standards of performance and reliability.



creation of customized solutions

- High flow rate
- High pressure
- Design variations



definition of special metallurgies

- Bronze
- Aluminium Bronze
- Stainless Steel
- Duplex
- Super Duplex



heavy duty applications consultancy

- High temperature of pumped liquid
- High solids content in water
- Inshore and offshore marine applications
- Booster submergence



control and command panel supply

- Custom electromechanical and electronic control panels
- IoT monitoring for predictive maintenance
- Sensors
- Remote control

Innovation

At Caprari, innovation is at the core of everything we do. Our range of products is continually evolving, driven by our R&D teams' commitment to expanding our range and optimizing existing solutions. Through advanced analysis and fluid-structure interaction simulations, we deliver high-performance, reliable solutions that meet the demands of modern water management. This dedication has also led to the development of a significant portfolio of patents, underscoring our expertise and leadership in the industry.

GREEN BOX App

Caprari is a pioneer in leveraging mathematical algorithms, specialized software, and IoT (Internet of Things) technologies to maximize the efficiency and performance of pumping systems. This cutting-edge approach positions us at the forefront of sustainable water management solutions.



**over 70
registered
international
patents**

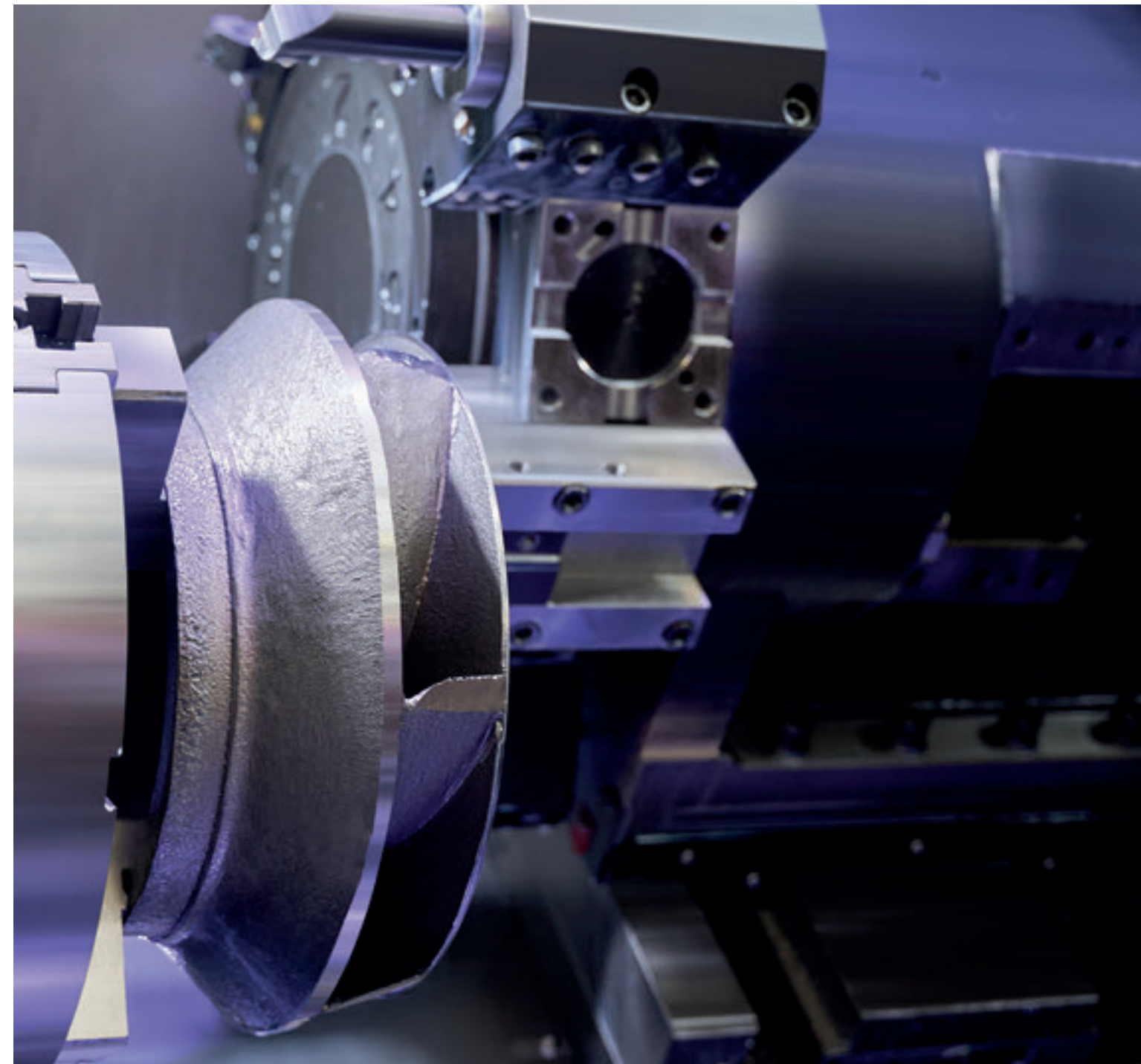


Production technology

Caprari's strength lies in our vertical production strategy and advanced process automation, ensuring precision and efficiency across all operations. Our commitment to continuous improvement drives significant annual investments in cutting-edge production technologies.

Our facilities feature state-of-the-art machining centers and an innovative, sustainable automatic painting plant. Equipped with self-learning anthropomorphic robots, the plant meets the highest standards, including corrosivity class C4-H/IM1-H, in compliance with ISO 12944.

This advanced infrastructure allows us to offer extensive product customization options and unparalleled production flexibility, ensuring the highest levels of quality and professionalism for our global customers.



Latest generation
**machining
centres**



Robotised processing islands

with anthropomorphic robots



Painting plants

with self-learning

Certified quality

At Caprari, quality is embedded in every stage of our process, from design to final delivery. Our commitment is upheld by our dedicated Quality Centers, four state-of-the-art Testing Rooms, and a CTF (Customer Testing Facility) certified and managed by a specialized team.

We are equally committed to sustainability and the protection of human health. All Caprari products comply with the RoHS directive and REACH regulations, including rigorous PFAS content control, ensuring our solutions meet the highest environmental and safety standards.



System certifications



Product certifications



Global presence local operation

Caprari's customer-centric approach drives the development of high-quality products, services, and tailored solutions. Supported by a global network of subsidiaries, specialized partners, and distributors, we deliver efficient and professional service, meeting our customers' needs at every stage—from design to after-sales support.

To further empower our customers and partners, we offer specialized training through the Caprari Training Centre in Modena, as well as the PumpPro Academy. This comprehensive digital platform provides 24/7 access to learning resources, ensuring continuous development and expertise in water management solutions.



**fast
deliveries**
worldwide



**original
spare parts**
always available



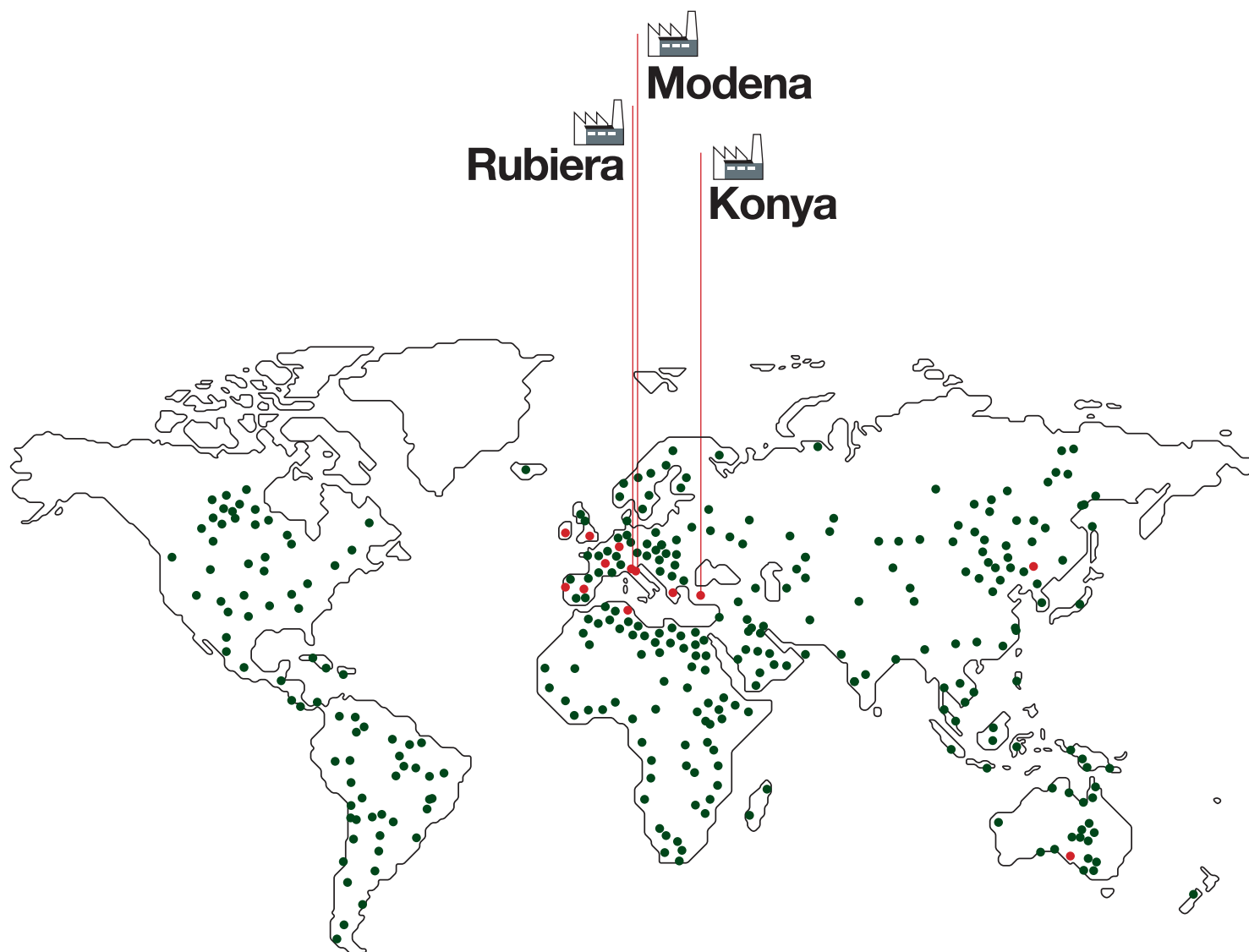
**specialist
instruction**
at training centers and online



**repairs and
maintenance**
on site and in the workshop

Network

Caprari boasts an extensive and well-established global sales network, supported by specialized centers that have been developed over time to serve our customers. Our dedicated teams and partners are committed to delivering exceptional service and expert advice, all while managing one of the world's most vital and scarce resources - Water. This network ensures that we provide the highest standards of support, wherever our customers are located.




 **Caprari Italia**
Via Emilia Ovest, 900
41123 Modena (Italy)
Tel. +39 059 897611
e-mail: info@caprari.it

 **Bombas Caprari SA**
C/Federico Chueca 5 - Polig. Ind. Santa Rosa
28806 Alcalá de Henares - Madrid (Spain)
Tel. +34 91 8895861
e-mail: info@bombascaprari.es

 **Caprari France SAS**
60 Av. du Centre
78180 Montigny-le-Bretonneux, (France)
Tel. +33 1 30139270
e-mail: accueil@caprari.com

 **Caprari Pumpen GmbH**
Kleemanngasse 15
D-90765 Fürth - Bayern (Germany)
Tel. +49 911 610930
e-mail: caprari@caprari.de

 **Caprari Pumps (UK) LTD**
Caprari House - Bakewell Road - Orton Southgate
Peterborough PE2 6XU (Great Britain)
Tel. +44 1733 371605
e-mail: info@caprari.co.uk

 **Caprari Hellas SA**
Industrial Area of Sindos
Municipality of Ehedorou
57022 Thessaloniki (Greece)
Tel. +30 2310 797967
e-mail: info@caprari.gr

 **Caprari Portugal LDA**
Rua Matadouro Regional Lt 46 Armaz B/C
Zona Industrial
2005-002 Santarém (Portugal)
Tel. +351 243 350610
e-mail: geral@caprariportugal.pt

 **Calpeda Pumps (Ireland) Ltd.**
Unit 5, Old Quarry Campus
Kilshane Park Blanchardstown
Co. Dublin 15 (Ireland)
Tel. +353 1 8612200
e-mail: info@calpedaireland.com


 **Caprari Tunisie SA**
Rue Annaba - Z. Ind.elle Ben Arous
2013 Ben Arous (Tunisia)
Tel. +216 79 390001
e-mail: tunisie@caprari.com

 **Caprari Pumps Australia PTY LTD**
no. 1 Maritime Court
5013 Gillman
South Australia (Australia)
Tel. +61 8 8290 0767
e-mail: sales@caprari.com.au

 **Caprari Pumps (Shanghai) co. Ltd.**
1109 Shenneng International Plaza
No.1 Central Fuxing Rd
200011 Huangpu District, Shanghai (China)
Tel. +8621 5386 5192
e-mail: info@caprari.it

 **HQ - Modena**
Via Guido Cavani 220
41123 Modena (Italy)
Tel. +39 059 897611

 **Rubiera Plant**
Via Mantegna 6
42048 Rubiera - RE (Italy)

 **Konya Plant**
Polmot Motor Makina San. Ve tic. A.S.
Büyük Kayacık
Mah. Organize Sanayi Bölgesi 103.
Cad. No :15 42300 Selcuklu Konya (Turkey)

Product range

Submersible pumps and motors

Ideal for

IRRIGATION | WATERWORKS | INDUSTRY | CIVIL ENGINEERING | FIRE-FIGHTING

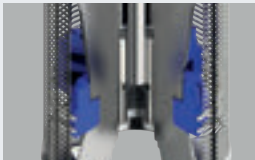


Series		E6 ÷ 22	E4 - 6X	E6 ÷ 12PX	E6 - 8NVX	E6 ÷ 10KX	E5MX
Pump Ø [inches]		6" ÷ 22"	4" - 6"	6" ÷ 12"	6" - 8"	6" - 10"	5"
Max. power [kW]		440	45	440	110	150	1,5
Max. flow rate [L/s]	50 Hz	350	12	190	37	60	2,5
	60 Hz	420	12	190	42	74	3,6
Max. head [m]	50 Hz	700	700	850	440	450	100
	60 Hz	650	550	730	460	450	110
Drinking water certifications		●	●	●	●		●
Metallurgies		Cast iron Bronze Stainl. steel Duplex Superduplex	Stainless steel Technopolymer	Stainl. steel Duplex Superduplex	Stainl. steel	Stainl. steel	Stainl. steel



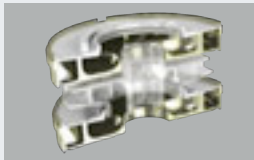
Series	MAC6 ÷ 14	MMP6 ÷ 10	MPC6 ÷ 10	MC4
Motor Ø [inches]	6" ÷ 14"	6" ÷ 10"	6" ÷ 10"	4"
Power [kW]	4 ÷ 440	4 ÷ 220	4 ÷ 150	0,37 ÷ 7,5
Frequency	50-60	100-120	50-60	50-60
No. of poles	2 - 4	4	2	2
Connection type	NEMA 6-8 PROPRIETARY	NEMA 6-8	NEMA 6-8	NEMA 4
Type	ASYNCHRONOUS REWINDABLE WATER FILLED	SYNCHRONOUS PERMANENT MAGNETS REWINDABLE WATER FILLED	ASYNCHRONOUS REWINDABLE WATER FILLED	ASYNCHRONOUS REWINDABLE OIL FILLED
Inverter use	●	●	●	●
High-temperature windings	●	●	●	●
Drinking water certifications	●	●		●
Metallurgies	Cast iron Stainl. steel Duplex Superduplex	Cast iron Stainl. steel Duplex Superduplex	Cast iron Stainl. steel	Stainl. steel

Patents and innovations



DEFENDER

Anti-corrosion device: it accelerates passivation of the stainless steel components



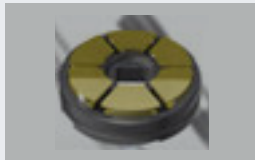
SAND-OUT

Wear ring system for applications with sand and solids up to 300g/m³



SMART-FIX

Valve-pump casing fastening system resistant to high pressures above 70 bar



HT BEARING

Maximum resistance to axial thrust, up to 70,000N



MOTOR PROTECTOR

Sand protection device: protection of coupling area and mechanical seal



C PLUS

The best pumping solution for applications with submersible electric pumps driven by VSD



MEDIUM VOLTAGE

The ideal solution for applications requiring medium voltage power supply



PERMANENT MAGNETS

Motors with efficiency above 90%: energy saving



Series	MEC-AG MEC-MG BHG	MEC-D BHD
DN pompa	65 ÷ 250	40 ÷ 200
Max. power [kW]	140	132
Max. flow rate [L/s]	290	140
Max. head [m]	185	170
Drinking water certifications	●	●
Metallurgies	Cast iron Bronze	Cast iron Bronze



Serie		NC NCH NCD	CVX CVD
DN pompa		32 ÷ 250	25 ÷ 150
Max. power [kW]	50 Hz	355	75
	60 Hz	355	75
Max. flow rate [L/s]	50 Hz	450	50
	60 Hz	420	50
Max. head [m]	50 Hz	160	315
	60 Hz	160	250
Drinking water certifications		●	●
Metallurgies		Cast iron Bronze Stainl. steel	Cast iron Stainl. steel



SCC2	PM PMA PMX	MEC-A	MEC-MR	NMC	HMU	BHR	HV	MD
65 ÷ 350	50 ÷ 150	40 ÷ 125	65 ÷ 125	32 ÷ 100	40 ÷ 50	200 ÷ 250	18 ÷ 80	40 ÷ 100
2000	700	132	132	90	55	37	90	18.5
2000	700	90	132	90	55	37	90	18.5
1000	160	130	100	180	26	280	50	60
1300	140	130	100	180	26	280	50	60
190	1000	140	210	95	280	25	250	85
260	1000	90	185	95	280	25	250	85
●	●	●	●	●	●	●	●	●
Cast iron Bronze Stainl. steel	Cast iron Bronze Stainl. steel	Cast iron Bronze	Cast iron Bronze	Cast iron Bronze Stainl. steel	Cast iron Stainl. steel	Cast iron Bronze	Cast iron Bronze Stainl. steel	Cast iron Bronze

Product focus

MEC-AG / MEC-MG / BHG



MODULAR SAE3 / SAE4 / SAE5 SUPPORT

A single pump model with an interchangeable connection flange: ideal for all types of diesel engines



NC / NCD

Standardised horizontal pumps compliant to EN733 standard

- Easy maintenance
- Back pull-out system
- Efficiency above 80%



SCC2 SPLIT CASE

Horizontal split case pumps

- Efficiency above 80%
- Easy maintenance
- Maximum installation flexibility



PM

High pressure multi-stage pumps

- Head up to 100bar
- Maximum reliability
- Many configurations and metallurgies

K+: THE NEXT GENERATION OF WASTEWATER PUMPS

- The wide range of the K+ series is designed for wastewater containing solids and gases
- The excellent quality of the hydraulic profiles ensures maximum efficiency
- The pump's exceptional compactness ensures maximum reliability and easy installation



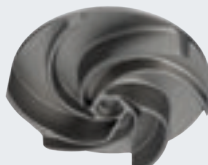
DN40 → DN500

Serie		K+	K+ ENERGY	KCA
Pump DN		150 ÷ 500	40 ÷ 350	80 ÷ 150
Max. power [kW]	50 Hz	345	82	26
	60 Hz	250	62	26
Max. flow rate [L/s]	50 Hz	1600	660	130
	60 Hz	1450	480	130
Max. head [m]	50 Hz	66	66	37
	60 Hz	55	66	40
Atex version		●	●	●
Metallurgies		Cast iron Bronze Stainless steel	Cast iron Bronze Stainless steel	Cast iron Bronze Stainless steel

ONE SOLUTION FOR ALL APPLICATION



KCT
vortex + shredder



KCW
vortex



KCM
single-channel

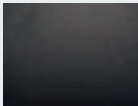


KCD
multi-channel

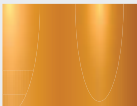


KCA
open double-blade

AVAILABLE IN MATERIALS



Cast iron



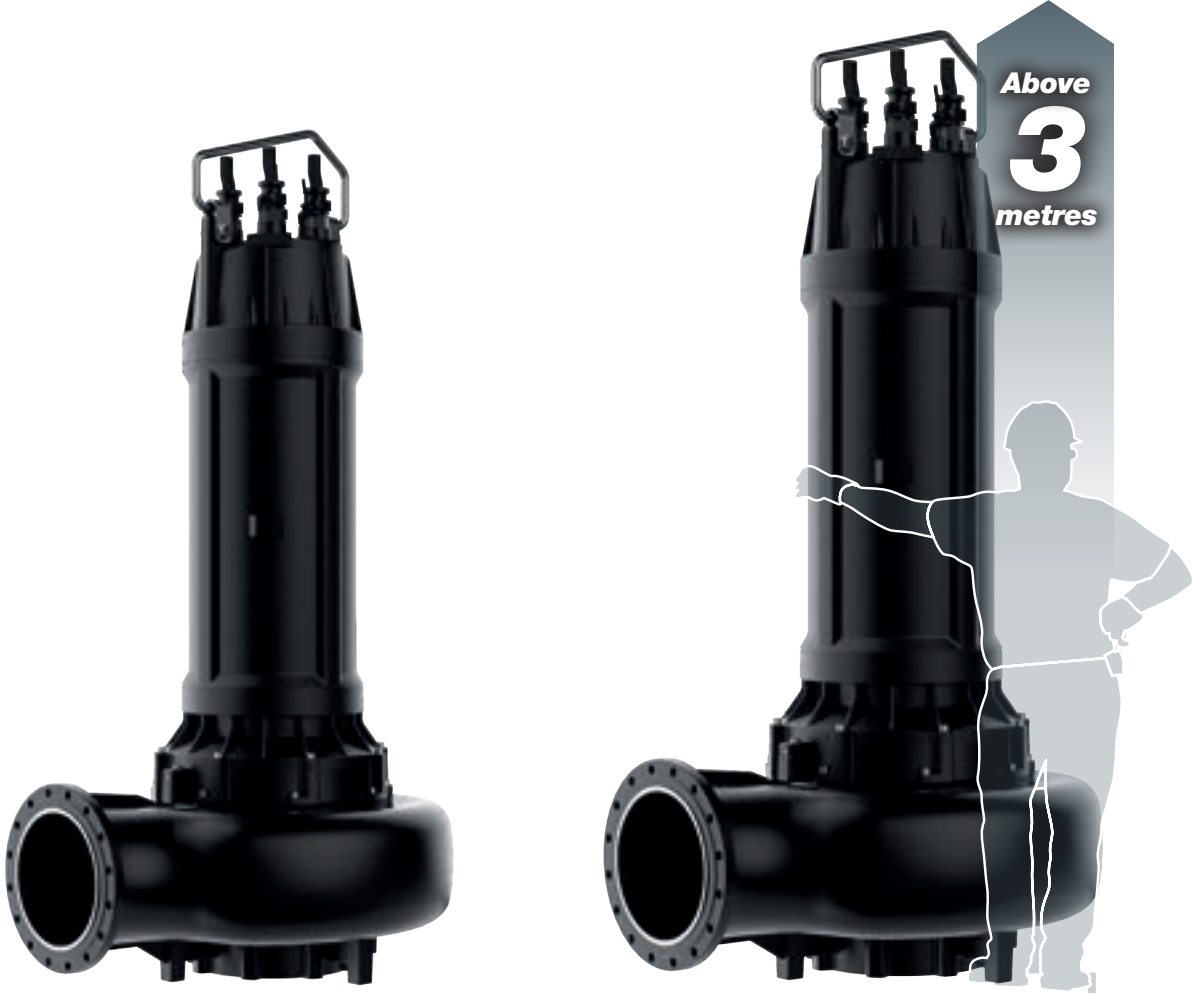
Bronze



Stainless Steel

PAINTING

- CERAMIC
- ANTI-ABRASION
- ANTI-EROSION



K+ ENERGY: INNOVATION AND RELIABILITY

K+ NON-STOP: ANTI-CLOGGING SYSTEM

The only wastewater pump featuring 4 combined anti-clogging effects



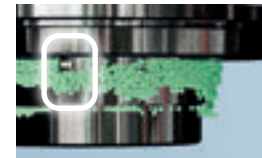
The widest free passages on the market



Fibre cutting system in the area behind the impeller



Impeller cleanliness and bearing protection



Solid body anti-sedimentation system



IE3 EFFICIENCY CLASS MOTORS

- Premium performance
- Maximum energy saving



CONDUCTIVITY PROBE

- Standard on all models, including the ATEX version (Caprari International Patent)
- Motor protection against liquid seepage



DRYWET SYSTEM (Caprari International Patent)

- Patented oil cooling system
- Simple operation



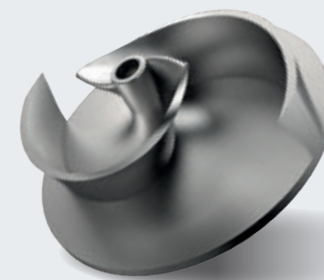
TANK



DRY CHAMBER

**A SINGLE
PUMP MODEL
FOR MULTIPLE
INSTALLATIONS**

KCA SERIES



HIGH-EFFICIENCY IMPELLER

- Open double-blade construction: efficiency above 80%
- Maximum wear resistance: hardened cast iron

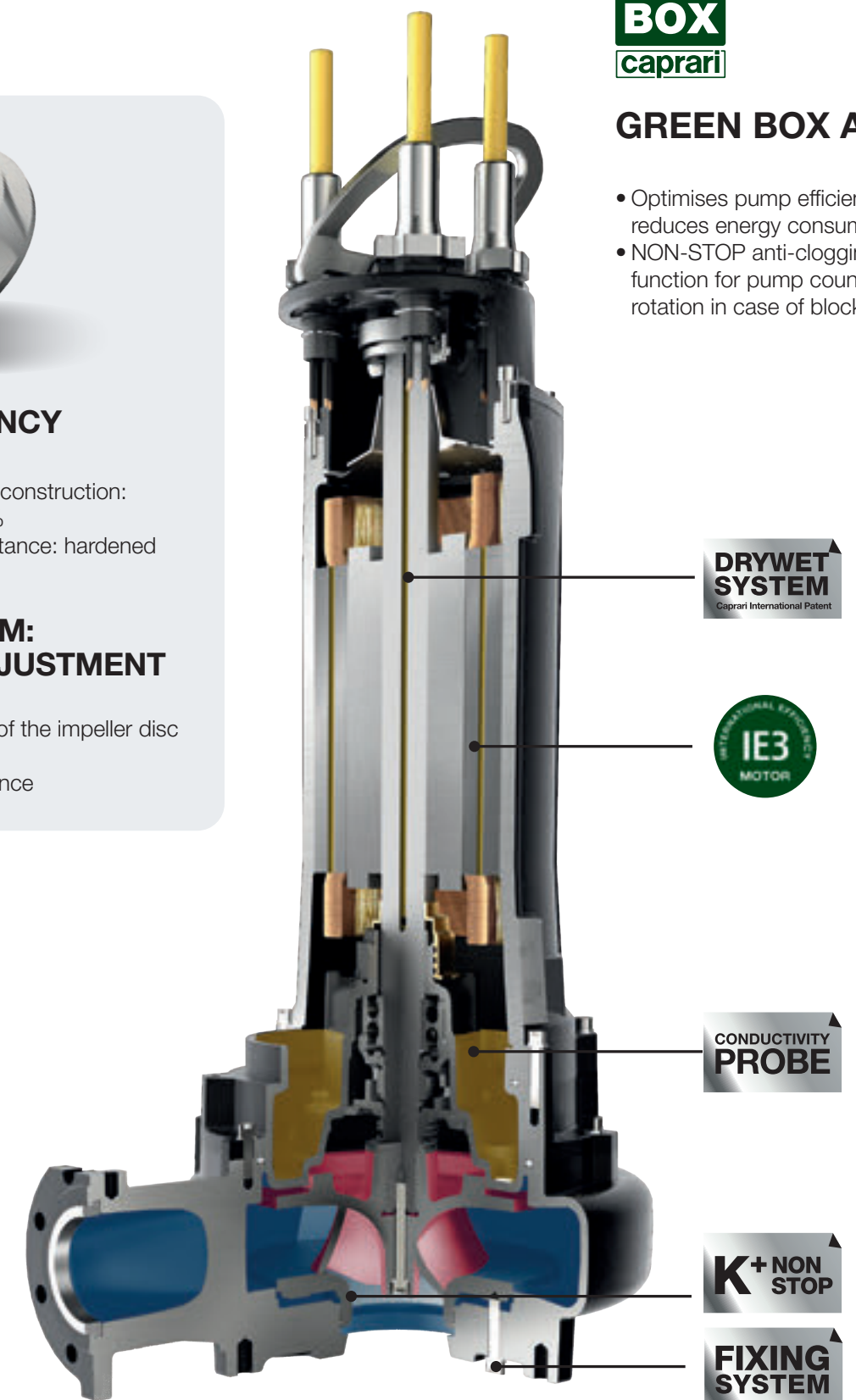
FIXING SYSTEM: IMPELLER ADJUSTMENT SYSTEM

- Simple adjustment of the impeller disc via external screw
- Simplified maintenance



GREEN BOX App

- Optimises pump efficiency and reduces energy consumption
- NON-STOP anti-clogging function for pump counter-rotation in case of block



**DRYWET
SYSTEM**
Caprari International Patent

**IE3
MOTOR**
INTERNATIONAL EFFICIENCY CLASS

**CONDUCTIVITY
PROBE**

**K+ NON
STOP**

**FIXING
SYSTEM**

IDEAL FOR

- Drainage
- Rainwater
- Wastewater
- Domestic
- Civil engineering
- Industry
- Shipbuilding



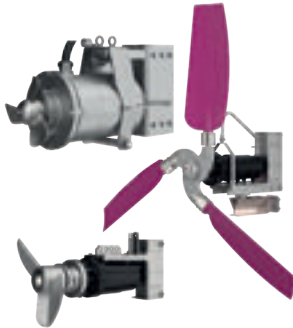
Series		D		M	
Pump DN		G 1/4 ÷ DN150		G 1/2 ÷ DN65	
Max. power [kW]	50 Hz	22		2,6	
	60 Hz	22		2,6	
Max. flow rate [L/s]	50 Hz	90		48	
	60 Hz	90		48	
Max. head [m]	50 Hz	65		28	
	60 Hz	65		28	
Impeller		Channels Vortex		Channels Vortex With shredder	
Metallurgies		Cast iron Stainless steel Noryl		Cast iron Stainless steel	



Series		K-KOMPACT	
Pump DN		80 ÷ 350	
Max. power [kW]		50 Hz	200
Max. flow rate [L/s]		50 Hz	750
Max. head [m]		50 Hz	65
Metallurgies		Cast iron Bronze Stainless steel	

Close-coupled surface electric pumps for pumping domestic and industrial wastewater:

- IE3/IE4 standardised surface electric motors
- Vortex and channel impellers
- Horizontal and vertical installation in dry chamber
- Double mechanical seal on the shaft



MIXER

Submersible mixers and flow accelerators:

- Direct starting or with gearbox
- Innovative design and high quality materials
- Best efficiency, energy savings and reliability



MIXOFLUSH

System for the automatic cleaning of the lifting stations:

- Prevents sedimentation at the bottom of the tank of suspended substances in the liquid
- Stops the formation of foam and surface crusts



OXY-FLOW

Aeration system for oxygenation and homogenisation processes in wastewater treatment plants:

- Compact and easy to install
- Ideal for rainwater collection tanks
- Installation in tanks of any shape and size



Strengths

RELIABILITY AND DURABILITY

- Abrasion resistance: high quality materials
- Double mechanical seal for protection against dry running
- Electric motor thermal protection

FLEXIBILITY OF USE

- Horizontal/vertical delivery port with threading/flanging
- Single/three-phase versions with and without float switch
- Installation with support feet or duck-foot

EASY MAINTENANCE

- Light and easy to handle
- Easily accessible electric motor
- Commercial mechanical seals easy to find

Vertical lineshaft pumps

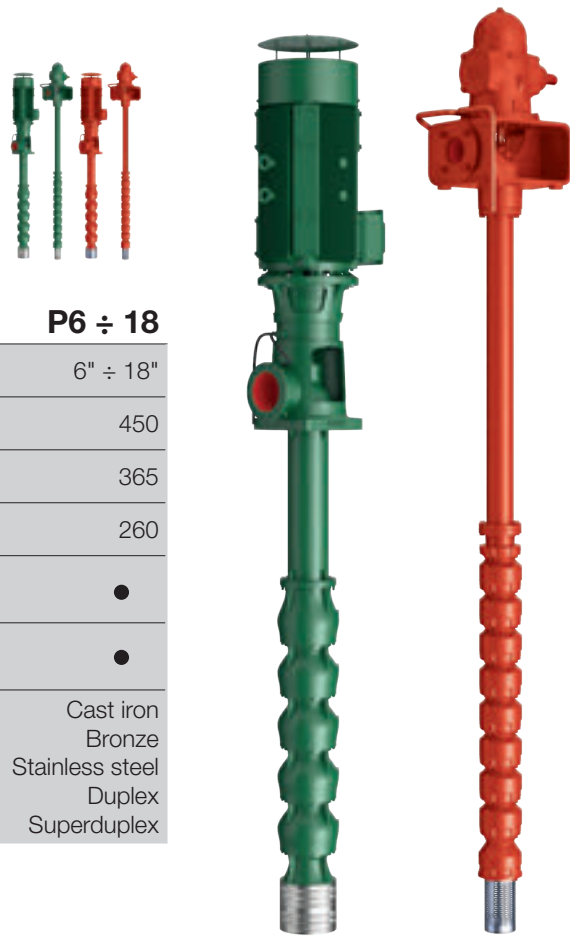
IDEAL FOR

- Irrigation
- Fire fighting
- Water delivery
- Land reclamation
- Industrial
- Water delivery for domestic use

THE UNIT CONSISTS OF

- Pump casing
- Drive unit
- Line shaft
- Strainer and/or foot valve

Series	P6 ÷ 18
Pump Ø [inches]	6" ÷ 18"
Max. power [kW]	450
Max. flow rate [L/s]	365
Max. head [m]	260
Drinking water certifications	●
Fire-fighting certifications	●
Metallurgies	Cast iron Bronze Stainless steel Duplex Superduplex



Control group with electric motor

Control group with angle transmission

Control and monitoring systems



Remote control device

The Caprari GREEN BOX connects all electric pump to a smartphone, tablet, or PC via the Caprari App. The device allows the user to monitor, collect, manage and download performance data (flow rate, pressure, temperature, vibration, etc.). The device's active function allows the user to remotely modify the electric pumps' parameters and to stop/restart the machines if the set thresholds are exceeded.

- The patented software keeps the pump operating at its best efficiency point (BEP), thus reducing energy consumption: a unique solution in the pumping industry
- The NON-STOP anti-clogging function allows the counter rotation of the pump, which is ideal in case of block



DEFENDER

- Prevents corrosion caused by stray currents, seawater infiltration into groundwater, and allows the use in salty water
- Protects the cast iron components against graphitisation, and speeds up the passivation of the stainless steel components

Strengths

EFFICIENCY

- High energy savings and low system costs
- Best hydraulic performance on the market
- IE4 efficiency class electric motors

FLEXIBILITY OF USE

- Installation depth up to 250m
- Coupling with electric motors or endothermic engines
- Installation in wells, tanks, rafts and platforms

RELIABILITY AND DURABILITY

- Robust and high quality of materials
- Advanced casting technologies
- Cast iron, bronze, stainless steel and duplex versions



ELECTRICAL PANELS AND FREQUENCY CONVERTERS

- Startings: direct, star-delta, stator impedance, with autotransformer, soft-starter, and inverter
- CapDRIVE: onboard frequency converter
- Customisation and dedicated accessories

VSD

The electrical panel with frequency converter guarantees:

- Reduced plant operating costs
- Speed regulation
- Prevents water hammer

CapDRIVE

Starting with onboard frequency converter:

- Easy installation
- Compact and robust
- Controls one or more pumps
- Combined operation with connection to other devices



Caprari S.p.A.

Via Emilia Ovest, 900

41123 Modena (Italia)

Tel. +39 059 897611

email: info@caprari.it

www.caprari.com

